

∞ Tilton Crafts ∞

Counted Cross Stitch Chart



Katness II

Stitch Count: 300 x 424

www.TiltonCrafts.com

Instructions

This design is recommended to be stitched over 1 on 25 count fabric, but you may use any count fabric that you are comfortable with. Traditionally, most will use 1 strand of floss for 22c / 25ct / 28ct, and 2 strands of floss for 14ct / 16ct / 18ct. Charts are recommended to be stitched from page 1 top left to the last page bottom right. (see diagram below). Also, please take a moment to scan over your symbol list before you begin, as some symbols appear similar.

If the chart contains Kreinik 032 #4 (very fine braid) we recommend that you use one strand of the Kreinik along with one strand of white floss.

You may also use the tent stitch or full cross stitches depending on your preference. We want to thank you for purchasing this design and welcome any questions or comments that you may have at any time.

Website: www.TiltonCrafts.com

Email: Support@TiltonCrafts.com

Start your stitching on Page 1 and continue over to Page 5. Page 6 will start below your Page 1 stitching. Page 11 will start below your page 6 stitching, and so forth.

Page 1	Page 2	Page 3	Page 4	Page 5
Page 6	Page 7	Page 8	Page 9	Page 10
Page 11	Page 12	Page 13	Page 14	Page 15
Page 16	Page 17	Page 18	Page 19	Page 20
Page 21	Page 22	Page 23	Page 24	Page 25
Page 26	Page 27	Page 28	Page 29	Page 30

Cleaning & Care

When handling any needlework, always take the special care that is necessary to keep your work clean. Wash hands frequently to prevent body oils from staining the fabric or cross stitching.

Be sure to remove your cross stitching from the hoop each time you stop stitching to prevent hoop marks from soiling your fabric.

It is recommended that you use approximately 18" lengths of thread when stitching your project. This will help to avoid knotting, twisting, or fraying of the thread while you work.

Your project should be stored in a bag or workbasket when not being stitched to protect it from dust, spills, etc.

Washing Instructions For Cross Stitch

If you have followed the care instructions, you may not find it necessary to launder your piece before framing or finishing it. If, however, your piece has become soiled, wash it following the instructions below:

Always wash each cross stitch separately.

Wash your cross stitch in lukewarm water with a mild detergent or dishwashing liquid. Do NOT use Woolite, harsh detergents, or chlorine bleach.

Rinse cross stitch several times in clear water. Do not worry if water becomes colored when washing your piece – continue rinsing in clear water.

Roll the cross stitch between two clean towels squeezing gently without wringing – Do Not allow cross stitch piece to touch upon itself. Unroll towels and spread out piece flat to dry on a towel. Never leave damp cross stitch folded or in a heap.

To iron your piece, place the dry cross stitch face down between two clean towels and press with a warm, not hot, iron. To remove creases or fold lines from your piece, you may find it necessary to use the steam setting on your iron.

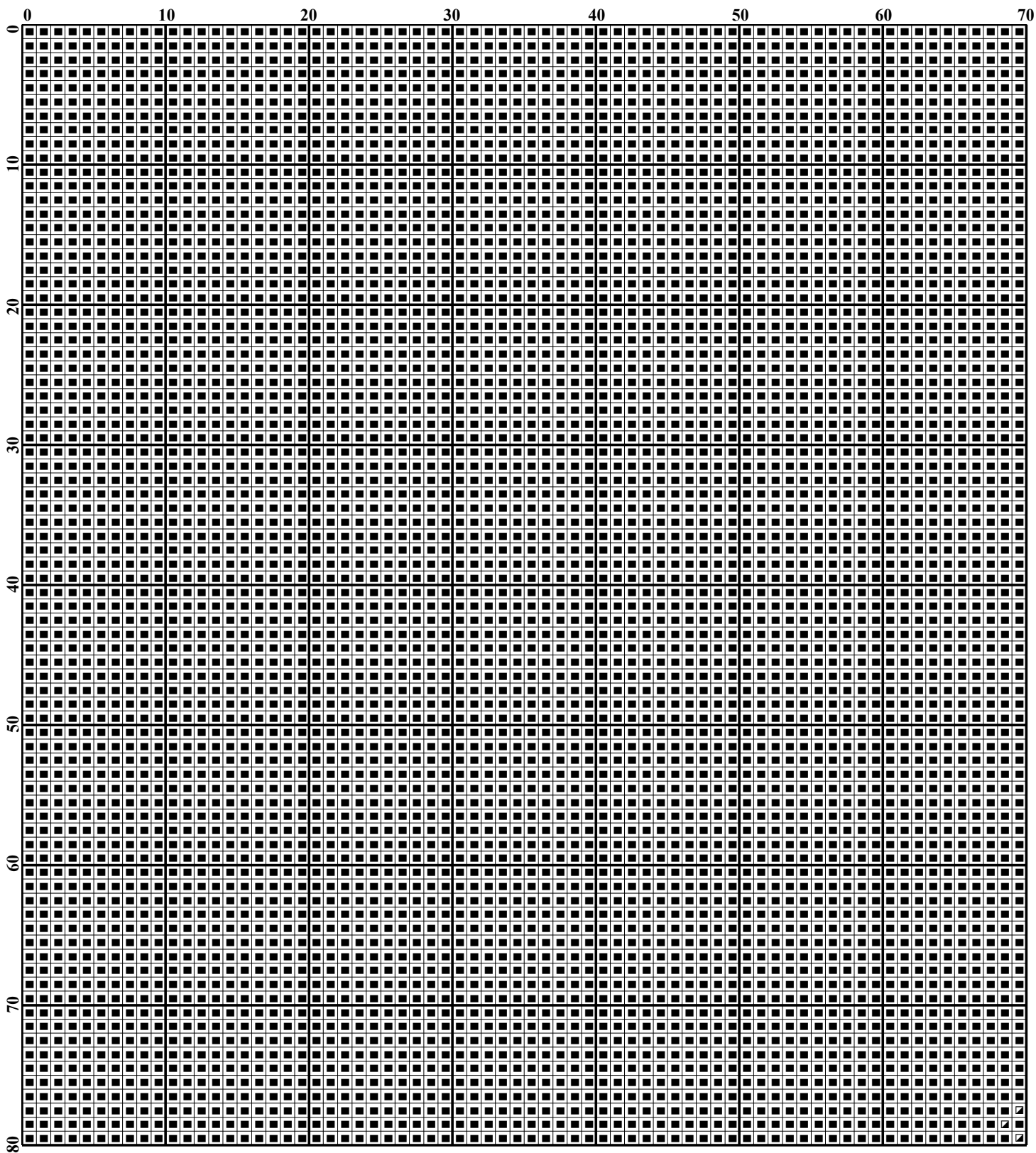
It is NOT recommended that Scotchgard or other products of this type be used on your projects as they may cause chemical reactions with your thread dyes.

It is generally NOT recommended that your cross stitch be dry cleaned. However, certain fabrics (i.e. wools) may require dry cleaning. We suggest that you speak to your local dry cleaner, advising him that there may be a reaction between the thread dyes and the dry cleaning chemicals (i.e. benzene, trichlorethylene, etc).

Pattern Name: Katness II
Designed By: Shelley Lee
Company: Tilton Crafts
Copyright: © 2015 Tilton Crafts - Artwork © Daniel Kordek
Fabric: White - Evenweave, Linen
Stitch Count: 300 W x 424 H
Size: 25ct, 12" x 16-7/8"

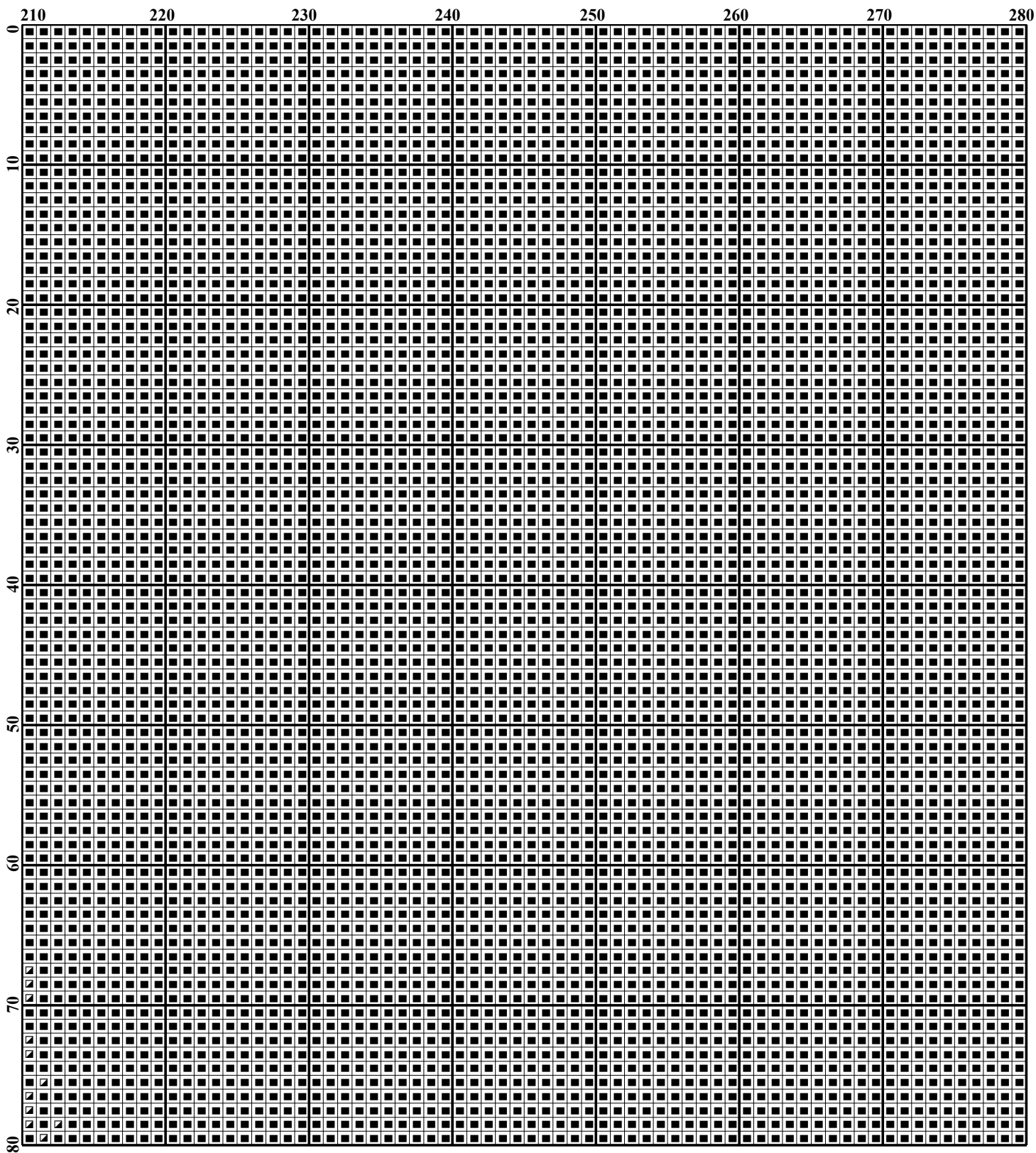
Symbol	Type	Number	Color	Skeins
●	DMC	154	Grape-VY DK	1
♥	DMC	221	Shell Pink-VY DK	1
K	DMC	223	Shell Pink-LT	1
R	DMC	301	Mahogany-MD	1
■	DMC	310	Black	14
%	DMC	347	Salmon-VY DK	1
A	DMC	351	Coral	1
3	DMC	352	Coral-LT	1
§	DMC	353	Peach	1
Æ	DMC	355	Terra Cotta-DK	1
O	DMC	356	Terra Cotta-MD	1
◀	DMC	433	Brown-MD	1
¶	DMC	434	Brown-LT	1
⚡	DMC	435	Brown-VY LT	1
5	DMC	436	Tan	1
9	DMC	445	Lemon-LT	1
N	DMC	451	Shell Gray-DK	1
Π	DMC	452	Shell Gray-MD	1
#	DMC	613	Drab Brown-VY LT	1
S	DMC	640	Beige Gray-VY DK	1
E	DMC	720	Orange Spice-DK	1
◆	DMC	721	Orange Spice-MD	1
F	DMC	722	Orange Spice-LT	1
=	DMC	725	Topaz	1
L	DMC	726	Topaz-LT	1
3	DMC	728	Topaz	1
∕	DMC	744	Yellow-Pale	1
⌘	DMC	779	Cocoa-DK	1
✕	DMC	801	Coffee Brown-DK	1
▣	DMC	815	Garnet-MD	1
Y	DMC	842	Beige Brown-VY LT	1
▶	DMC	902	Garnet-VY DK	1
Ω	DMC	920	Copper-MD	1
B	DMC	921	Copper	1
X	DMC	922	Copper-LT	1
⌘	DMC	938	Coffee Brown-UL DK	1
D	DMC	947	Burnt Orange	1
	DMC	951	Tawny-LT	1
+	DMC	970	Pumpkin-LT	1
◆	DMC	975	Golden Brown-DK	1
e	DMC	977	Golden Brown-LT	1
★	DMC	3021	Brown Gray-VY DK	1
▼	DMC	3031	Mocha Brown-VY DK	1
Z	DMC	3033	Mocha Brown-VY LT	1

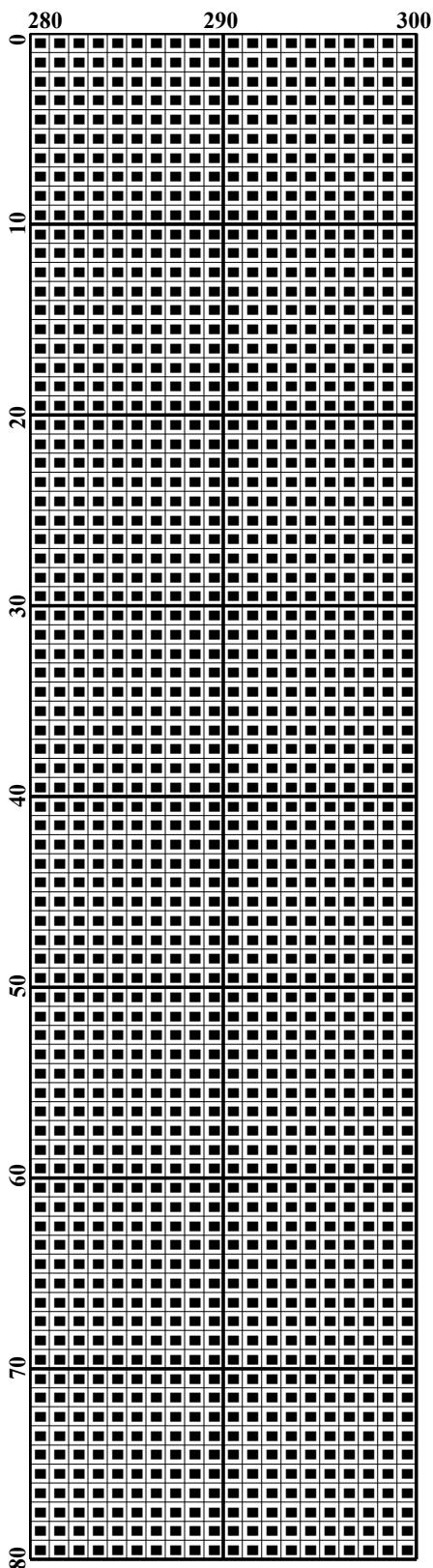
Symbol	Type	Number	Color	Skeins
a	DMC	3078	Golden Yellow-VY LT	1
■	DMC	3371	Black Brown	2
♣	DMC	3721	Shell Pink-DK	1
•	DMC	3722	Shell Pink-MD	1
▲	DMC	3740	Antique Violet-DK	1
/	DMC	3770	Tawny-VY LT	1
U	DMC	3773	Desert Sand-MD	1
8	DMC	3776	Mahogany-LT	1
C	DMC	3778	Terra Cotta-LT	1
d	DMC	3779	Terra Cotta-UL VY LT	1
W	DMC	3787	Brown Gray-DK	1
∧	DMC	3822	Straw-LT	1
G	DMC	3830	Terra Cotta-MD	1
☆	DMC	3854	Autumn Gold-MD	1
T	DMC	3856	Mahogany-UL VY LT	1
▒	DMC	3857	Rosewood-DK	1
M	DMC	3858	Rosewood-MD	1
Ж	DMC	3860	Cocoa	1
6	DMC	3861	Cocoa-LT	1
2	DMC	3864	Mocha Beige-LT	1
♡	DMC	3865	Winter White	1

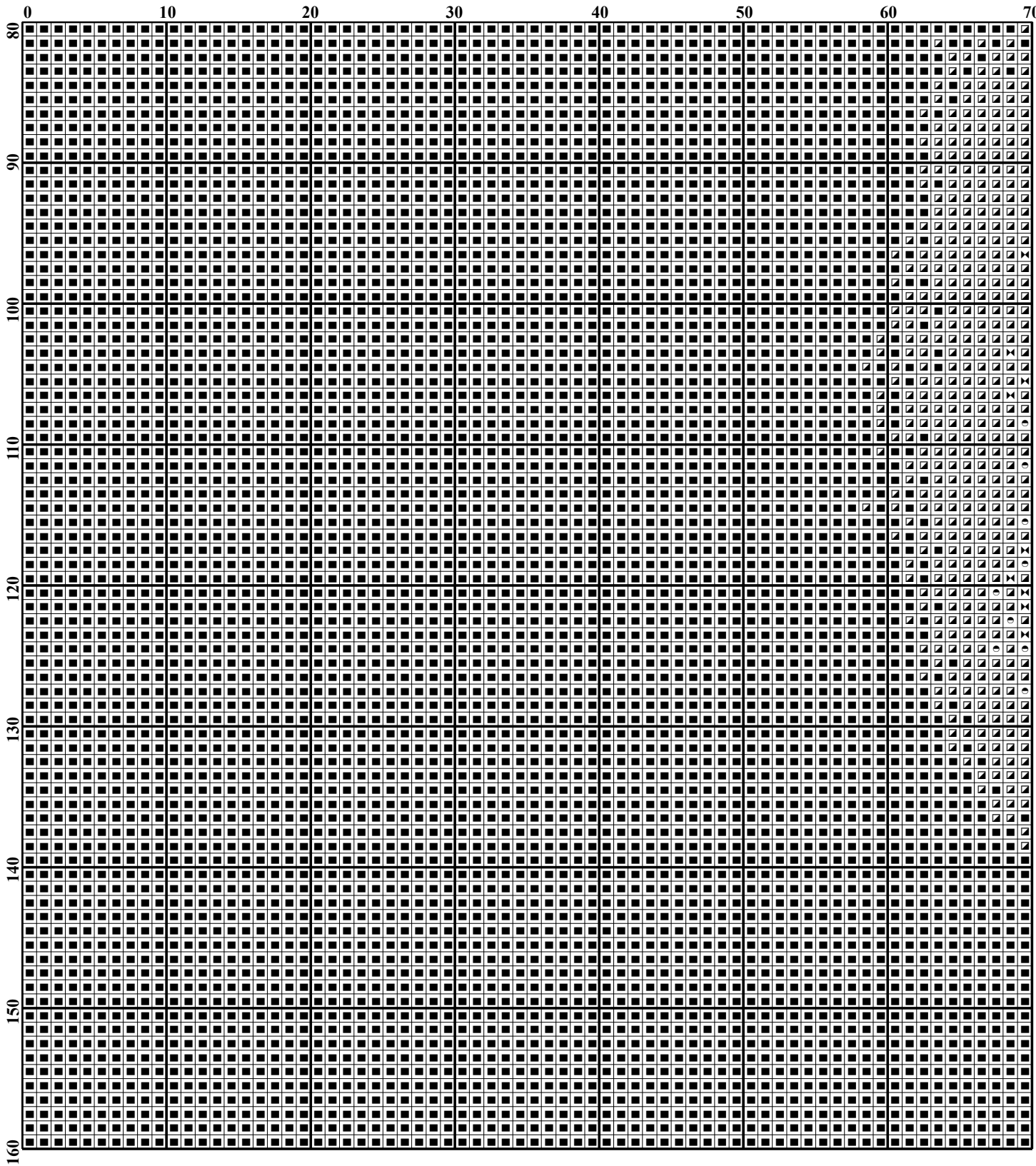


	70	80	90	100	110	120	130	140
0								
1								
2								
3								
4								
5								
6								
7								
8								
9								
10								
11								
12								
13								
14								
15								
16								
17								
18								
19								
20								
21								
22								
23								
24								
25								
26								
27								
28								
29								
30								
31								
32								
33								
34								
35								
36								
37								
38								
39								
40								
41								
42								
43								
44								
45								
46								
47								
48								
49								
50								
51								
52								
53								
54								
55								
56								
57								
58								
59								
60								
61								
62								
63								
64								
65								
66								
67								
68								
69								
70								
71								
72								
73								
74								
75								
76								
77								
78								
79								
80								

	140	150	160	170	180	190	200	210
0	■	■	■	■	■	■	■	■
10	■	■	■	■	■	■	■	■
20	■	■	■	■	■	■	■	■
30	■	■	■	■	■	■	■	■
40	■	■	■	■	■	■	■	■
50	■	■	■	■	■	■	■	■
60	■	■	■	■	■	■	■	■
70	■	■	■	■	■	■	■	■
80	■	■	■	■	■	■	■	■



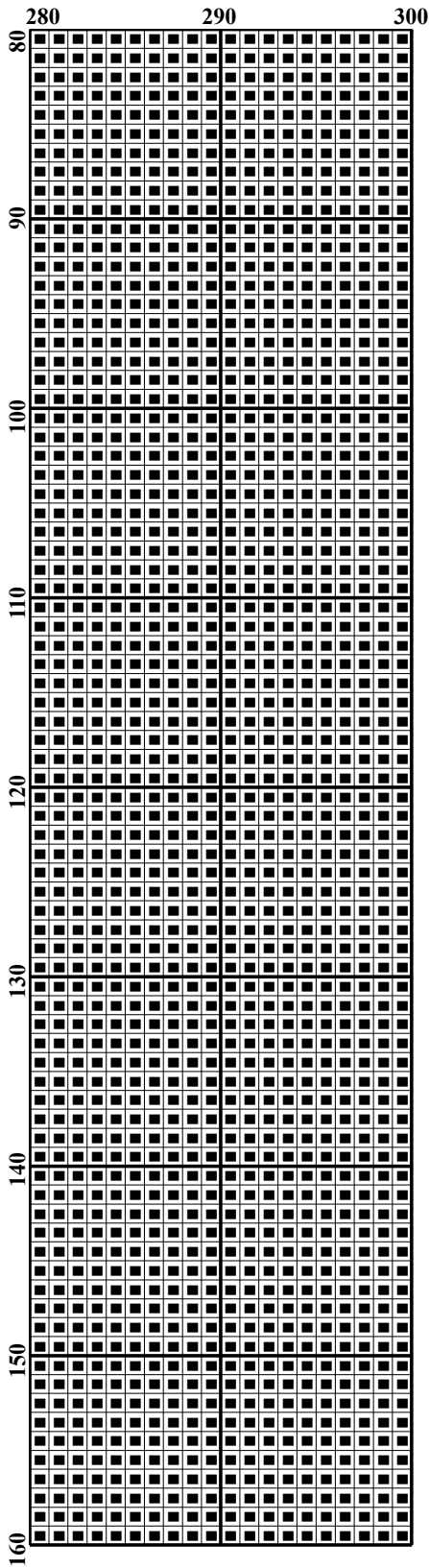


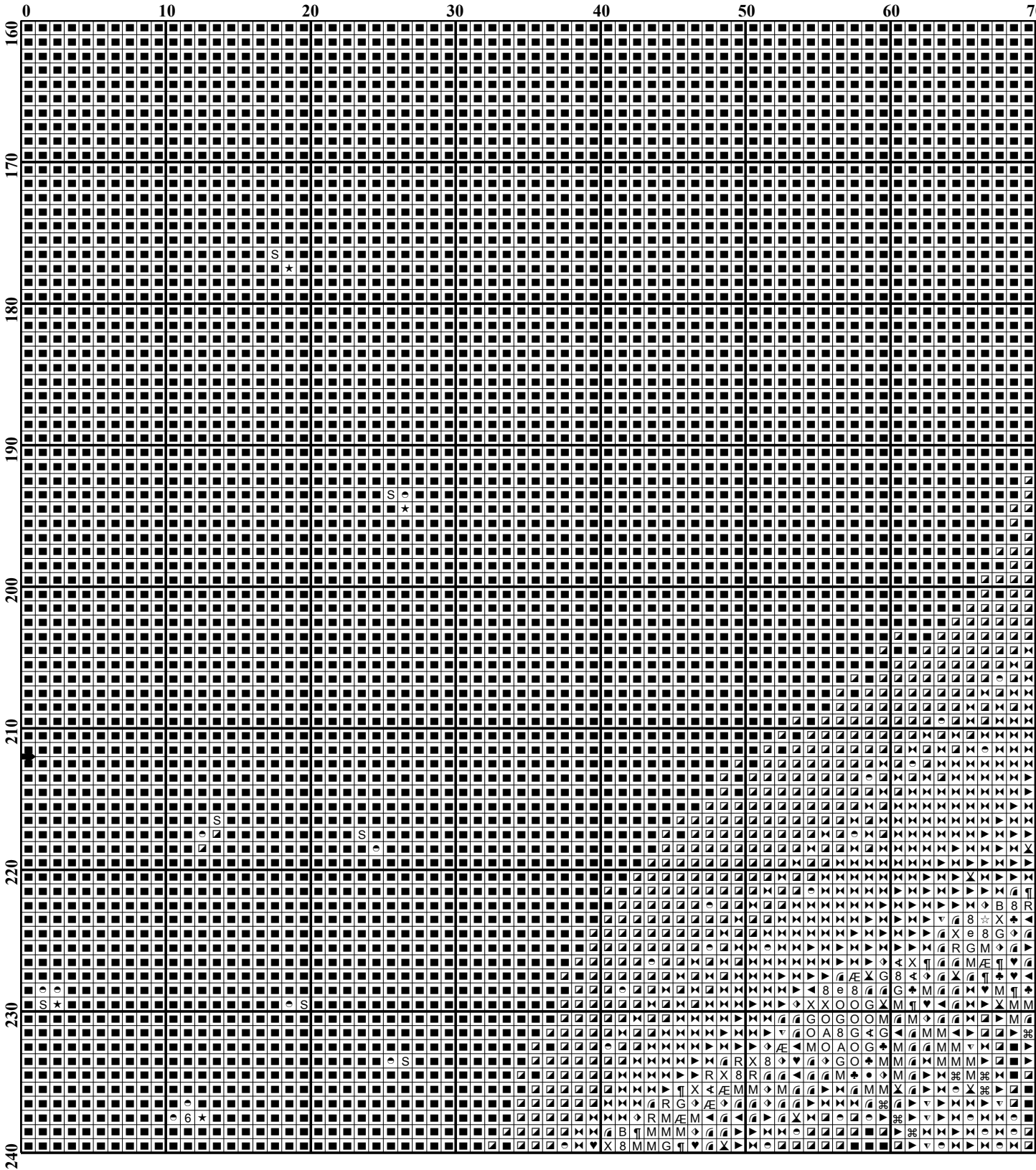


	70	80	90	100	110	120	130	140
80	■	■	■	■	■	■	■	■
90	■	■	■	■	■	■	■	■
100	■	■	■	■	■	■	■	■
110	■	■	■	■	■	■	■	■
120	■	■	■	■	■	■	■	■
130	■	■	■	■	■	■	■	■
140	■	■	■	■	■	■	■	■
150	■	■	■	■	■	■	■	■
160	■	■	■	■	■	■	■	■

	140	150	160	170	180	190	200	210
80	80	80	80	80	80	80	80	80
90	90	90	90	90	90	90	90	90
100	100	100	100	100	100	100	100	100
110	110	110	110	110	110	110	110	110
120	120	120	120	120	120	120	120	120
130	130	130	130	130	130	130	130	130
140	140	140	140	140	140	140	140	140
150	150	150	150	150	150	150	150	150
160	160	160	160	160	160	160	160	160
170	170	170	170	170	170	170	170	170
180	180	180	180	180	180	180	180	180
190	190	190	190	190	190	190	190	190
200	200	200	200	200	200	200	200	200
210	210	210	210	210	210	210	210	210

[illegible]

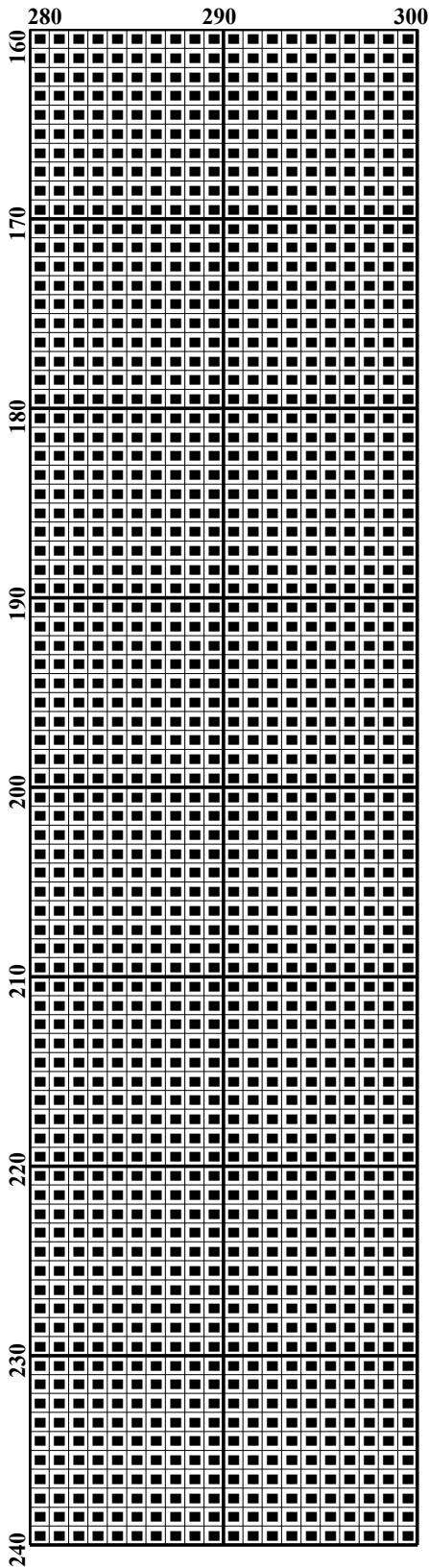




	70	80	90	100	110	120	130	140
160	R	B	B	R	R	R	R	R
170	R	B	B	R	R	R	R	R
180	R	B	B	R	R	R	R	R
190	R	B	B	R	R	R	R	R
200	R	B	B	R	R	R	R	R
210	R	B	B	R	R	R	R	R
220	R	B	B	R	R	R	R	R
230	R	B	B	R	R	R	R	R
240	R	B	B	R	R	R	R	R

[illegible]

[illegible]

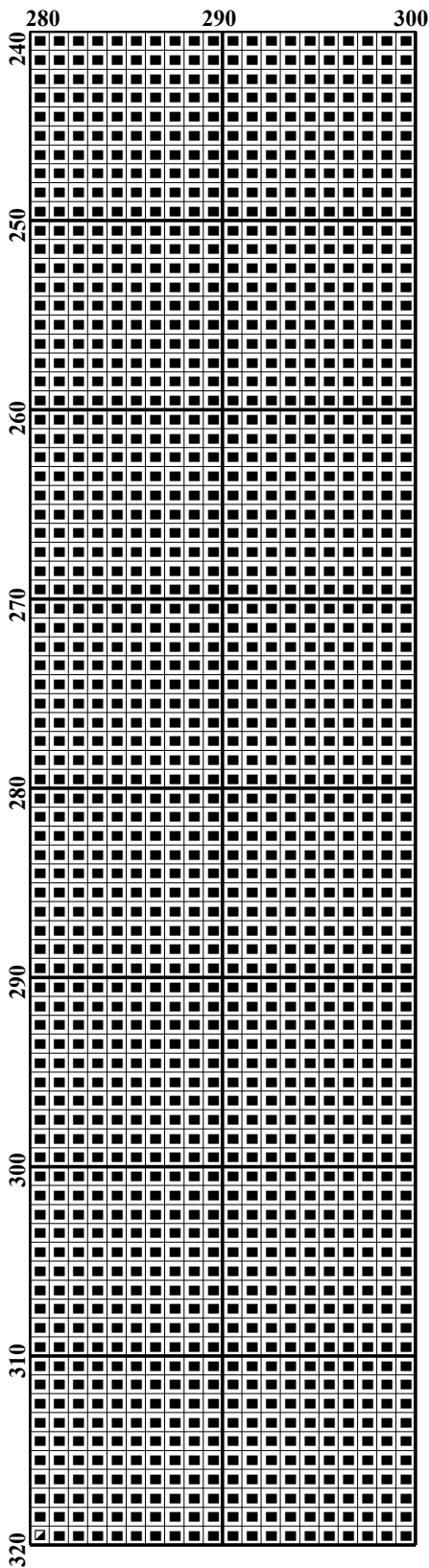


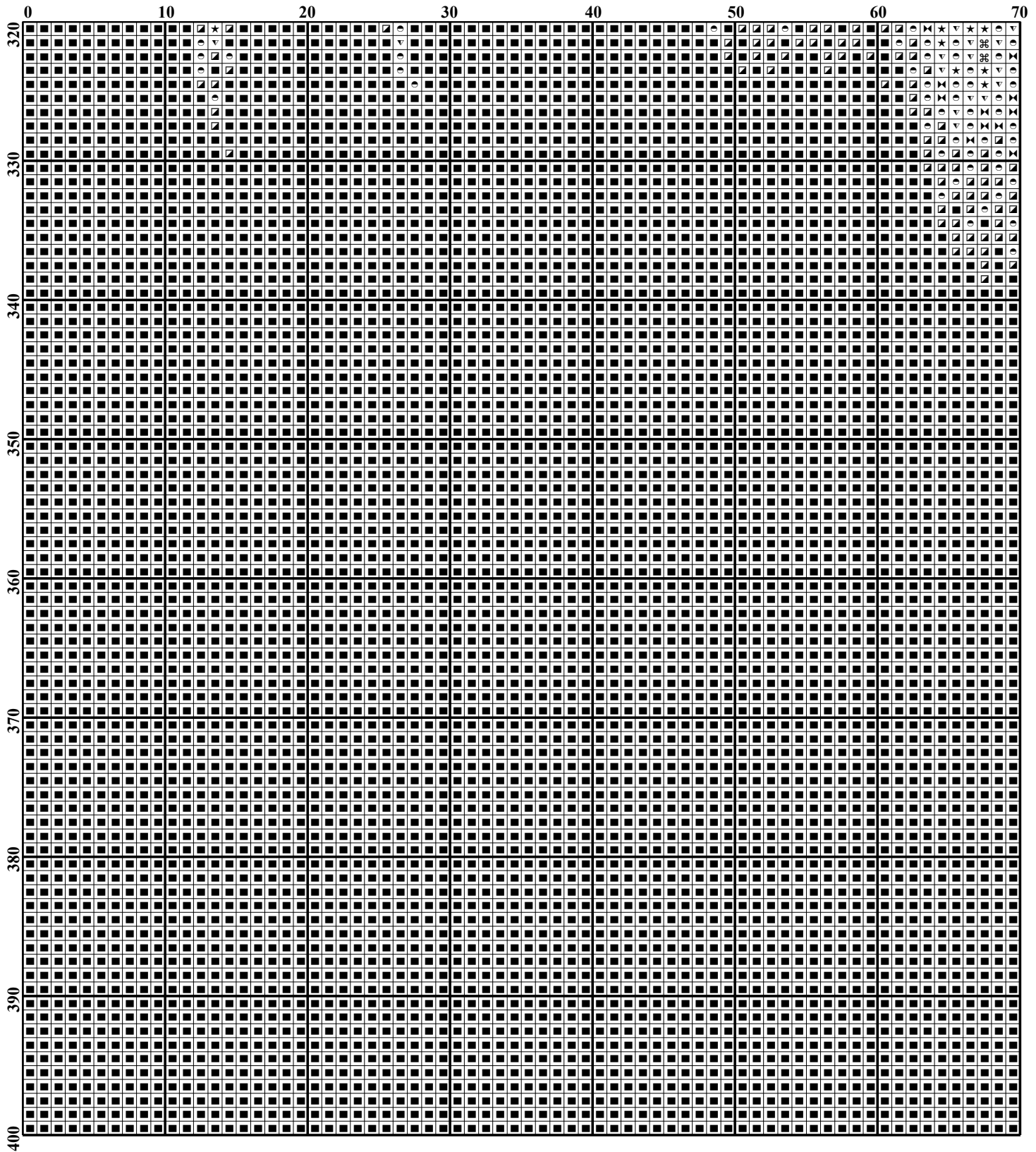
	0	10	20	30	40	50	60	70
240								
250								
260								
270								
280								
290								
300								
310								
320								

	70	80	90	100	110	120	130	140
240	■	■	■	■	■	■	■	■
250	■	■	■	■	■	■	■	■
260	■	■	■	■	■	■	■	■
270	■	■	■	■	■	■	■	■
280	■	■	■	■	■	■	■	■
290	■	■	■	■	■	■	■	■
300	■	■	■	■	■	■	■	■
310	■	■	■	■	■	■	■	■
320	■	■	■	■	■	■	■	■

	140	150	160	170	180	190	200	210
240	3C	3C	3C	3C	3C	3C	3C	3C
241	C	C	C	C	C	C	C	C
242	C	C	C	C	C	C	C	C
243	C	C	C	C	C	C	C	C
244	C	C	C	C	C	C	C	C
245	C	C	C	C	C	C	C	C
246	C	C	C	C	C	C	C	C
247	C	C	C	C	C	C	C	C
248	C	C	C	C	C	C	C	C
249	C	C	C	C	C	C	C	C
250	C	C	C	C	C	C	C	C
251	C	C	C	C	C	C	C	C
252	C	C	C	C	C	C	C	C
253	C	C	C	C	C	C	C	C
254	C	C	C	C	C	C	C	C
255	C	C	C	C	C	C	C	C
256	C	C	C	C	C	C	C	C
257	C	C	C	C	C	C	C	C
258	C	C	C	C	C	C	C	C
259	C	C	C	C	C	C	C	C
260	C	C	C	C	C	C	C	C
261	C	C	C	C	C	C	C	C
262	C	C	C	C	C	C	C	C
263	C	C	C	C	C	C	C	C
264	C	C	C	C	C	C	C	C
265	C	C	C	C	C	C	C	C
266	C	C	C	C	C	C	C	C
267	C	C	C	C	C	C	C	C
268	C	C	C	C	C	C	C	C
269	C	C	C	C	C	C	C	C
270	C	C	C	C	C	C	C	C
271	C	C	C	C	C	C	C	C
272	C	C	C	C	C	C	C	C
273	C	C	C	C	C	C	C	C
274	C	C	C	C	C	C	C	C
275	C	C	C	C	C	C	C	C
276	C	C	C	C	C	C	C	C
277	C	C	C	C	C	C	C	C
278	C	C	C	C	C	C	C	C
279	C	C	C	C	C	C	C	C
280	C	C	C	C	C	C	C	C
281	C	C	C	C	C	C	C	C
282	C	C	C	C	C	C	C	C
283	C	C	C	C	C	C	C	C
284	C	C	C	C	C	C	C	C
285	C	C	C	C	C	C	C	C
286	C	C	C	C	C	C	C	C
287	C	C	C	C	C	C	C	C
288	C	C	C	C	C	C	C	C
289	C	C	C	C	C	C	C	C
290	C	C	C	C	C	C	C	C
291	C	C	C	C	C	C	C	C
292	C	C	C	C	C	C	C	C
293	C	C	C	C	C	C	C	C
294	C	C	C	C	C	C	C	C
295	C	C	C	C	C	C	C	C
296	C	C	C	C	C	C	C	C
297	C	C	C	C	C	C	C	C
298	C	C	C	C	C	C	C	C
299	C	C	C	C	C	C	C	C
300	C	C	C	C	C	C	C	C
301	C	C	C	C	C	C	C	C
302	C	C	C	C	C	C	C	C
303	C	C	C	C	C	C	C	C
304	C	C	C	C	C	C	C	C
305	C	C	C	C	C	C	C	C
306	C	C	C	C	C	C	C	C
307	C	C	C	C	C	C	C	C
308	C	C	C	C	C	C	C	C
309	C	C	C	C	C	C	C	C
310	C	C	C	C	C	C	C	C
311	C	C	C	C	C	C	C	C
312	C	C	C	C	C	C	C	C
313	C	C	C	C	C	C	C	C
314	C	C	C	C	C	C	C	C
315	C	C	C	C	C	C	C	C
316	C	C	C	C	C	C	C	C
317	C	C	C	C	C	C	C	C
318	C	C	C	C	C	C	C	C
319	C	C	C	C	C	C	C	C
320	C	C	C	C	C	C	C	C

	210	220	230	240	250	260	270	280
240	■	■	■	■	■	■	■	■
250	■	■	■	■	■	■	■	■
260	■	■	■	■	■	■	■	■
270	■	■	■	■	■	■	■	■
280	■	■	■	■	■	■	■	■
290	■	■	■	■	■	■	■	■
300	■	■	■	■	■	■	■	■
310	■	■	■	■	■	■	■	■
320	■	■	■	■	■	■	■	■





	70	80	90	100	110	120	130	140
320	⬆	⬆	⬆	⬆	⬆	⬆	⬆	⬆
330	⬆	⬆	⬆	⬆	⬆	⬆	⬆	⬆
340	⬆	⬆	⬆	⬆	⬆	⬆	⬆	⬆
350	⬆	⬆	⬆	⬆	⬆	⬆	⬆	⬆
360	⬆	⬆	⬆	⬆	⬆	⬆	⬆	⬆
370	⬆	⬆	⬆	⬆	⬆	⬆	⬆	⬆
380	⬆	⬆	⬆	⬆	⬆	⬆	⬆	⬆
390	⬆	⬆	⬆	⬆	⬆	⬆	⬆	⬆
400	⬆	⬆	⬆	⬆	⬆	⬆	⬆	⬆

[illegible]

